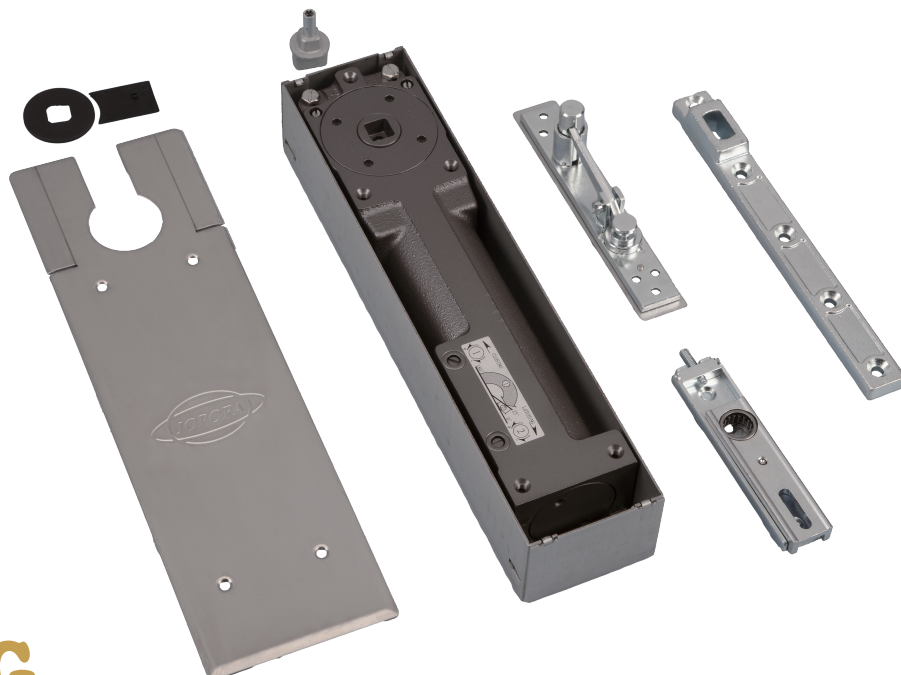




JPF-280 Series HEAVY DUTY FLOOR SPRING



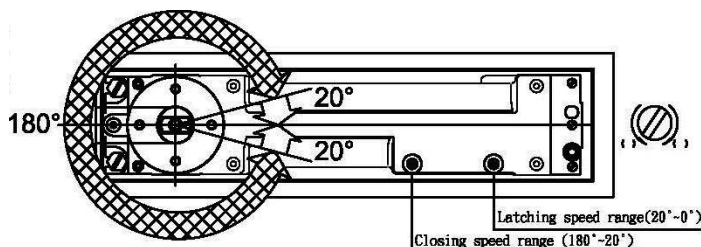
JPF-280 HEAVY DUTY FLOOR SPRING

is a double action floor spring which specially developed for heavy wooden, metal aluminum & toughened tempered glass door industries.

This Floor Spring is designed for special application multi-functional for door with 180° opening angle, and weight up to 300 kgs.

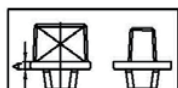
FEATURES & SPECIFICATION

- Length 341 mm x width 78 mm x depth 60 mm
- Suitable for single & double action doors.
- Maximum door opening angle at 180° in each direction.
- Maximum door weight 300 kgs. Maximum door width 1400mm
- Cam system for easy door open.
- Available for Hold-Open 90°, 105°, and No-Hold Open.
- For Fire Door, it must be in Non-Hold open type.
- Closing and latching speed controlled by the fully independent valves (closing from 180° ~ 20°, latching from 20° ~ 0°)



- The Spindle optional : Fixed and Exchangeable Spindle available.

Exchangeable spindle extension:

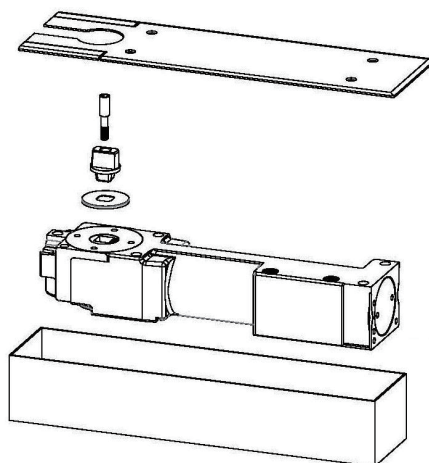


Dimension (A)	3mm	8mm	13mm	18mm	23mm	28mm	33mm	38mm	43mm	48mm	53mm
Spindle Extension	Standard	5mm	10mm	15mm	20mm	25mm	30mm	35mm	40mm	45mm	50mm

TECHNICAL DATA

Closing size	Closing Force	Max. Door Width	Max. Door Weight
EN4	33 ~ 36 Nm	1100 mm	200 kgs
EN5	40 ~ 50 Nm	1250 mm	250 kgs
EN6	53 ~ 58 Nm	1400 mm	300 kgs

CONSTRUCTION & TECHNICAL DETAILS



- Dimension of Cement Case : (L) 341 x (W) 78 x (H) 60mm
- Adjustment in cement box : (L) 6 mm x (W) 6 mm
- Dimension of Cover Plate : (L) 358 mm x (W) 105mm
- Stainless Cover Plate with Polished or Satin finished.
- High grade cast iron mechanism body is housed within a galvanized steel loose box which is zinc protected & panited for corrosion resistance.
- Total mechanism immersed in high quality hydraulic fluid ensure smooth operating even under differing temerature conditions.
- Internal mechanism components utilizing heat treated high alloy steels & ball bearing for optimum efficiency.
- Built-in pressure relief valves protect the closer from oil-leakage.
- Speed adjustment valves can not be backed out of Floor Spring when adjustment, that eliminates oil leakage from the valves.