



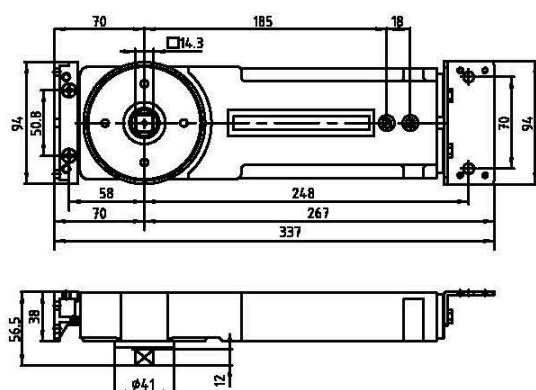
JAC-30 Series FLOOR SPRING

JAC-30 FLOOR SPRING

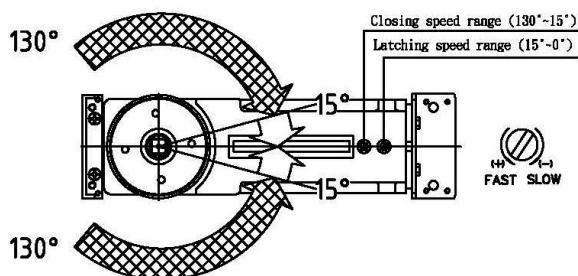
is a double action Overhead Concealed Door Closer which specially developed for Aluminum Door application.

FEATURES & SPECIFICATION

- Dimension of JAC-30 (Overhead Concealed Closer)



- Suitable for single & double action doors.
- Maximum door opening angle at 130° in each direction.
- Maximum door weight 100 kgs. Maximum door width 1100mm.
- Cam system for easy door open.
- Available for Hold-Open 90°, 105°, and No-Hold Open
- Closing and latching speed controlled by the fully independent valves (closing from 130° ~ 15°, latching from 15° ~ 0°)

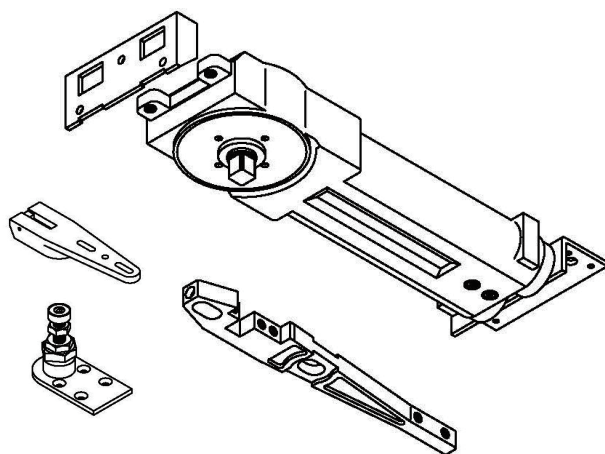


- Built-in pressure relief valves protect the closer from oil-leakage.
- Speed adjustment valves can not be backed out of Floor Spring when adjustment, that eliminates oil leakage from the valves.

TECHNICAL DATA

Closing size	Closing Force	Max. Door Width	Max. Door Weight
Light Duty	EN2 = 20 Nm	900 mm	80 kgs
Medium Duty	EN3 = 25 Nm	1000 mm	90 kgs
Heavy Duty	EN4 = 33 Nm	1100 mm	100 kgs

CONSTRUCTION & TECHNICAL DETAILS



- Accessories :
Side Load Arm : " S " Type or End Load Arm : " A " or " K " Type.
Standard Bottom Pivot Set.
- High grade cast iron mechanism body is housed within a galvanized steel loose box which is zinc protected & panited for corrosion resistance.
- Total mechanism immersed in high quality hydraulic fluid ensuring smooth operating even under differing temperature conditions.
- Internal mechanism components utilizing heat treated high alloy steels & ball bearing for optimum efficiency.
- The long spindle can be extend the Length as customer request (Extend 5mm or 10mm in length).
- ♦ **Warranty :**
3 years over 500,000 Opening - Closing Cycle life.