

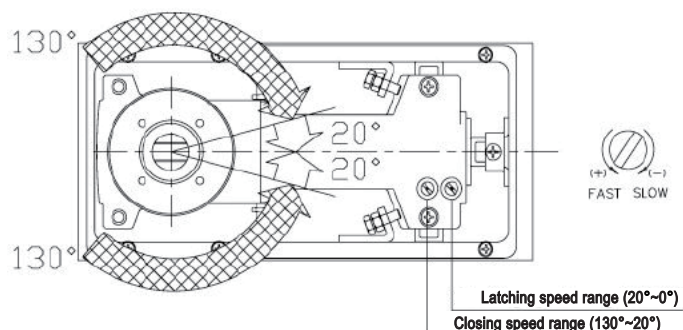
# JAC-220 Series FLOOR SPRING

## JAC-220 FLOOR SPRING

is a double action floor spring which specially developed for wooden, metal aluminum & toughened tempered glass door industries. This Floor Spring is designed for heavy traffic door, campact design.

## FEATURES & SPECIFICATION

- Length 297 mm x width 145 mm x depth 48 mm.
- Suitable for single & double action doors.
- Maximum door opening angle at 130° in each direction.
- Mechanical Hold -Open at 90°, Non Hold-Open are available.
- Adjustable Top Pivot.
- Maximum door weight 120 kgs. Maximum door width 1100mm.
- Cam system for easy door open.
- Closing and latching speed controlled by the fully independent valves ( closing from 130° ~ 20°, latching from 20° ~ 0° )

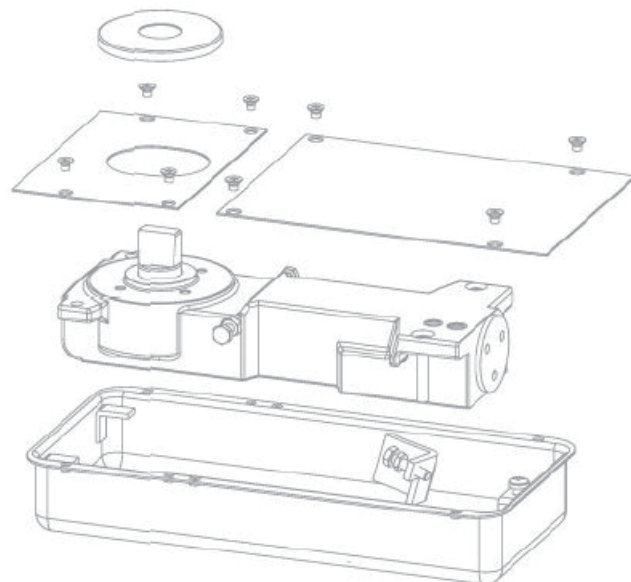


- High grade cast iron mechanism body is housed within a galvanized steel loose box which is zinc protected & panited for corrosion resistance .
- Internal mechanism components utilizing heat treated high alloy steels & ball bearing for optimum efficiency.

## TECHNICAL DATA

Closing size	Closing Force	Max. Door Width	Max. Door Weight
EN2	20 Nm	650 ~ 900 mm	60 ~ 90 kgs
EN3	25 Nm	900 ~ 1100 mm	90 ~ 120 kgs

## CONTRUCTION & TECHNICAL DETAILS



- Adjustment in cement box : ( L ) 6mm x ( W ) 6mm.
- Stainless Cover Plate with Polished or Satin finished.
- Stainless Cover Plate dimensions : ( L ) 308 x ( W ) 146 x ( H ) 1 mm.
- All mechanism immersed in high quality hydraulic fluid ensuring smooth operating even under differing temerature conditions.
- Built-in pressure relief valves protect the closer from oil-leakage.
- speed adjustment valves can not be backed out of Floor Spring when adjustment, that eliminates oil leakage from the valves.

### ♦ Warranty :

**3 years over 500,000 Opening - Closing Cycle life.**